



# J-chip 5 & J-chip 8 Control Panel Soft Manual



1	Introduction .....	3
2	Log-in display .....	3
3	Control .....	4
3.1	Measuring SW.....	4
3.2	Trigger SW.....	4
3.3	Measuring Clock .....	4
3.4	Trigger Setting.....	5
3.5	Receive Data .....	5
3.6	Power .....	5
3.7	LCD Contrast Ratio .....	5
4	Setting General .....	6
4.1	PC-ID .....	6
4.2	Next File Name .....	6
4.3	Tag Prefix .....	6
4.4	Holding Time .....	6
4.5	Measure at .....	6
4.6	GPS TIME Offset .....	6
5	Setting Serial.....	7
5.1	Type .....	7
5.2	Baudrate.....	7
5.3	Phone Number .....	7
5.4	Chat Script (Dial Out) .....	7
5.5	Chat Script (Dial In) .....	7
6	Setting of Network.....	8
6.1	Device Name .....	8
6.2	IP Address.....	8
6.3	Default Gateway.....	8
6.4	Net Mask .....	8
6.5	Listen Port .....	8
6.6	LAN LED.....	8
7	Setting of Connections.....	9
7.1	Type .....	9
7.2	LAN LED .....	9
7.3	Hot Stand-by.....	9
8	Setting of Advanced .....	10
8.1	Release Version .....	10
8.2	System Time.....	10
8.3	Battery Charge .....	10
8.4	Receiver log file .....	10
8.5	Firmware Update.....	10
8.6	Reboot.....	11
8.7	Power OFF .....	11
8.8	Password settings.....	11
9	File maintenance.....	12
9.1	Filter by PC_ID:.....	12
9.2	DOWNLOAD .....	12
9.3	Delete .....	12
10	About.....	13

## 1 Introduction

---

Please install Java – Run Time – to your PC since the Control Panel is programmed in Java. Any special installation is not required to use “JchipProCP.jar”.

The default setting of the receiver network is as follows:

IP address: 192.168.1.220

Net mask: 255.255.255.0

Default gateway: 192.168.1.254

When you changed the IP address and cannot remember the default IP address, please push the buzzer button. Then the IP address will appear on the display panel of the receiver.

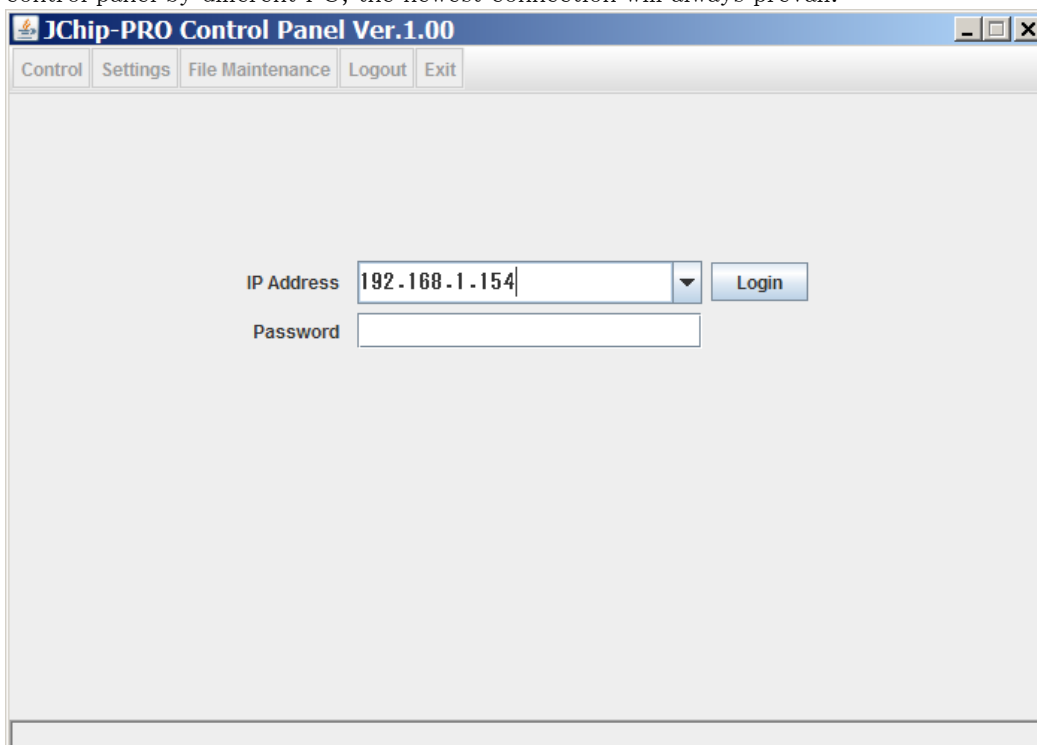
## 2 Log-in display

---

Please set segments of the IP address of your PC just same to the receiver.

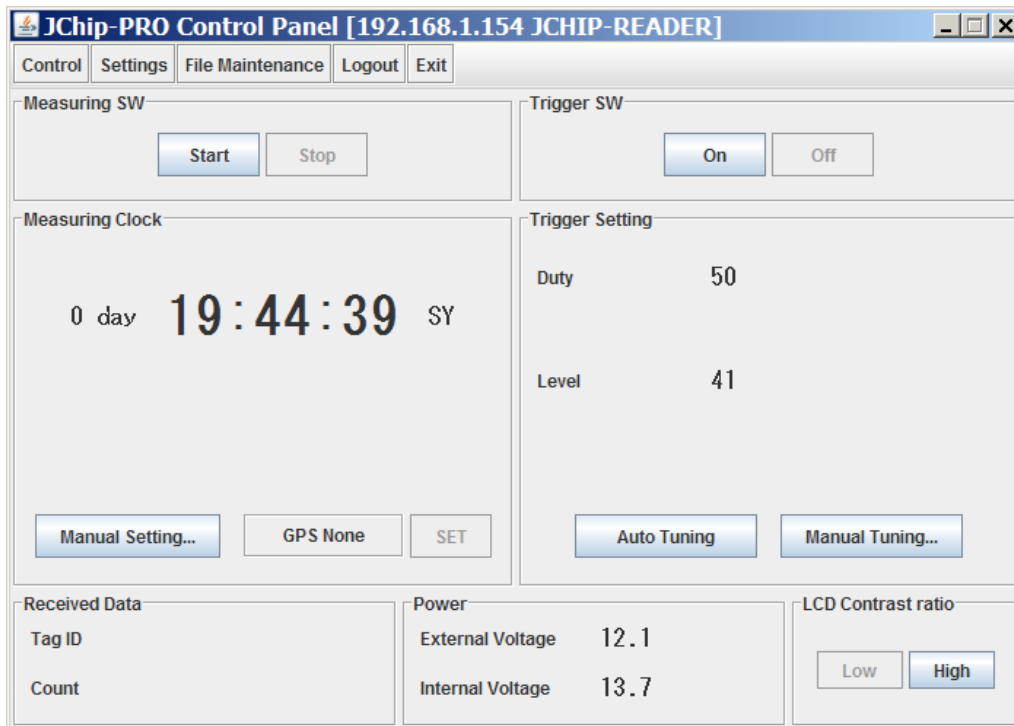
192. 168. 1. XXX

One control panel corresponds to one PC. If several connection has been established to one control panel by different PC, the newest connection will always prevail.



The screenshot shows a Java-based application window titled "JChip-PRO Control Panel Ver.1.00". The window has a menu bar with "Control", "Settings", "File Maintenance", "Logout", and "Exit". The main area contains a login form with two input fields: "IP Address" and "Password". The "IP Address" field is a dropdown menu with the value "192.168.1.154" selected. To the right of the "IP Address" field is a "Login" button. The "Password" field is an empty text box.

### 3 Control



#### 3.1 Measuring SW

“start” command:

Make new file and start measuring. Then it forwards the data.

“stop” command:

Stop measuring. It won't forward the data.

#### 3.2 Trigger SW

“On” command: Oscillating trigger

“OFF” command: Off the trigger

When trigger cable is disconnected from a receiver, the display of the control panel turned in yellow and the command becomes unworkable.

#### 3.3 Measuring Clock

This displays time of measuring clock.

Two English characters on the write side of the clock tell on what the time based.

SY ... internal clock

GP ... GPS (manually or automatically)

PC ... set by PC (by the command or on the Control panel)

RV ... set start time of the clock in advance and move the clock by external signal.

Manual Setting: It's also possible to set the clock by hand.

GPS : After receiver caught and fixed the GPS time, it becomes possible to click “GPS ” command.

### 3.4 Trigger Setting

- Duty : This is the duty cycle against trigger. When the trigger is auto-tuned, the duty level reaches 50, and this is the maximum. Trigger area becomes smaller by reducing the duty.

- Level : Indication of trigger condition.

※Please make sure how the trigger area becomes like ,by checking with J-chip tags. Because the size and the shape of the trigger area is changeable according to an environment where mat antenna has been set.

- Auto Tuning:

On clicking “Auto Tuning”, it starts a trigger area auto-tuning

Duty level of trigger area is set to 50 when auto-tuning has been commanded.

Manual tuning

Duty level can be changed manually.

It becomes more effective commanding manual tuning after auto tuned.

- When trigger antenna is disconnected from the receiver, the duty and level ratio becomes “ \_ ”.

### 3.5 Receive Data

- TAG ID

ID of the last tag data had been taken.

- Count

Total amount of recorded TAG DATA.

### 3.6 Power

- External Voltage

Voltage level of external power supply

- Internal Voltage

Voltage level of internal battery

- When background color turns in red

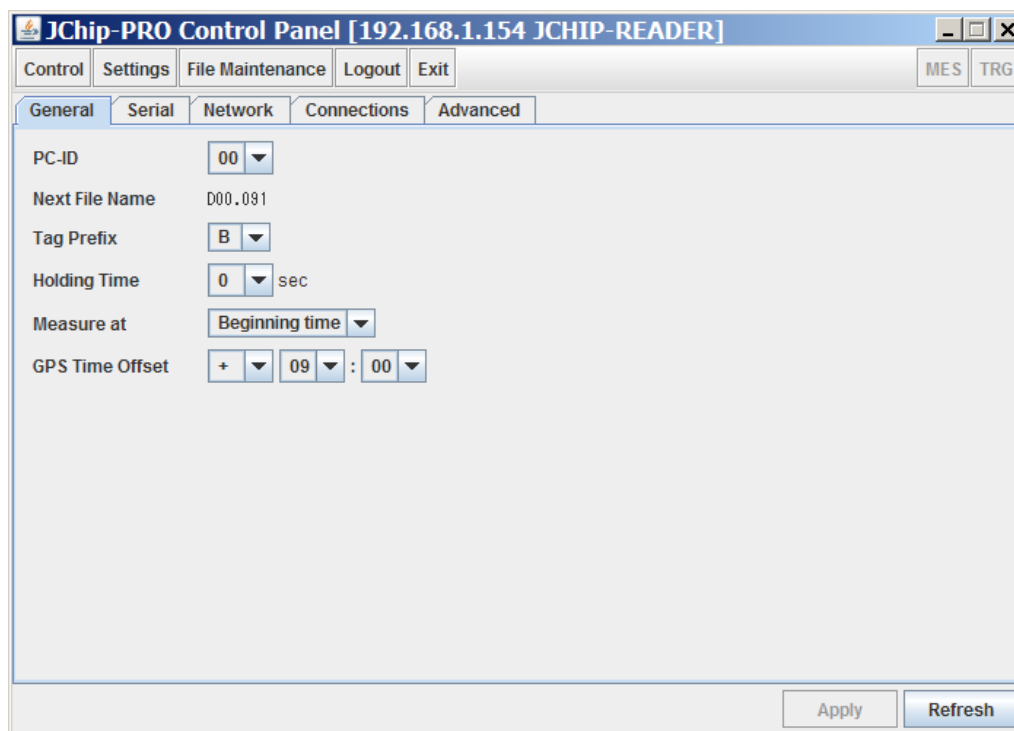
This is a warning signal of Low voltage level of power source. Please change the external battery etc.

### 3.7 LCD Contrast Ratio

Changing a contrast of the display color.

Able to adjust from HIGH or LOW.

## 4 Setting General



### 4.1 PC-ID

Naming newly made file. The name would be "D+PC-ID.xxx"  
xxx must be sequential number.

### 4.2 Next File Name

Name of the file next to be made.

### 4.3 Tag Prefix

First one character of TAG ID. Selectable from A~Z.

### 4.4 Holding Time

This is an interval period between generating one data to next.  
Holding time is Selectable from 1 to 60 seconds.

### 4.5 Measure at

Beginning time: The time when one tag entered a trigger area.

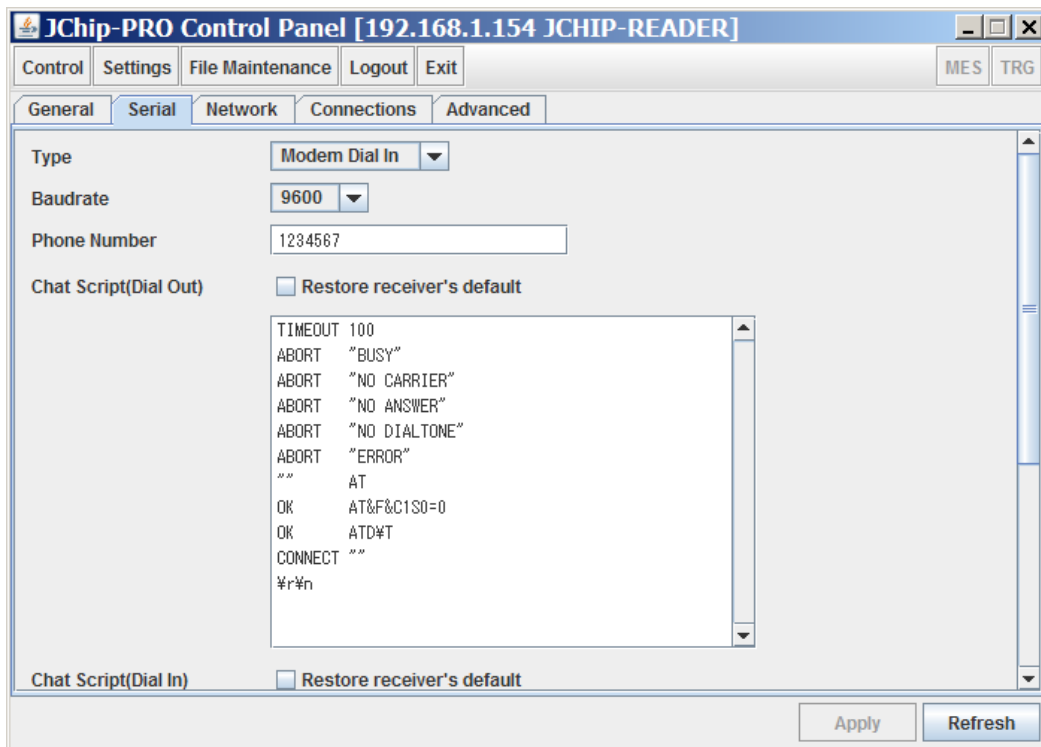
Mid time: Middle of a period between one tag entered to the trigger area until exit.

Remarks: When you make mid time setting, please give instruction to competitors not to stay inside the trigger area.

### 4.6 GPS TIME Offset

Insert time gap from GMT to the time of measuring place.

## 5 Setting Serial



### 5.1 Type

- Direct : Connecting PC directly to the receiver via RS232C cable.
- Modem Dial In : Using analog typed modem with serial connection, and make dial-in connection.
- Modem Dial Out : Using analog typed modem with serial connection, and make dial-out connection.

### 5.2 Baudrate

To set baud rate. When you choose "direct", please make a same setting to the PC.

### 5.3 Phone Number

When dialing out, insert the phone number to where it connects.

When setting dial out, please make sure the phone number is correct. Or it makes wrong call automatically.

### 5.4 Chat Script (Dial Out)

To be set when using a modem under dial-out condition.

When making special setting according to modems, please change the script accordingly.

When you loose sight what setting you should make, please re-set to default setting.

### 5.5 Chat Script (Dial In)

To be set when using a modem under dial-in condition.

When making special setting according to modems, please change the script accordingly.

When you loose sight what setting you should make, please re-set to default setting.

## 6 Setting of Network

The screenshot shows the 'JChip-PRO Control Panel [192.168.1.154 JCHIP-READER]' window. The 'Network' tab is selected, showing a comparison between 'Current settings' and 'New settings'. The 'Current settings' are: Device Name: JCHIP-READER, IP Address: 192.168.1.154, Default Gateway: 192.168.1.7, Net Mask: 255.255.255.0, Listen Port: 54321, LAN LED: Use. The 'New settings' fields are empty, indicating they are ready to be modified. A note at the bottom states: 'Note : If the setting of the network was changed, please reboot the receiver to activate the new setting. Please press the rebooting button which is in the advanced category.' Buttons for 'Apply' and 'Refresh' are at the bottom right.

	Current settings
Device Name	JCHIP-READER
IP Address	192.168.1.154
Default Gateway	192.168.1.7
Net Mask	255.255.255.0
Listen Port	54321
LAN LED	Use

Note : If the setting of the network was changed,  
please reboot the receiver to activate the new setting.  
Please press the rebooting button which is in the advanced category.

### 6.1 Device Name

To set the device name transmitted from the receiver when connection established

### 6.2 IP Address

To set IP address of the receiver

### 6.3 Default Gateway

To set network gateway connected

### 6.4 Net Mask

To adjust Net Mask of network connected

### 6.5 Listen Port

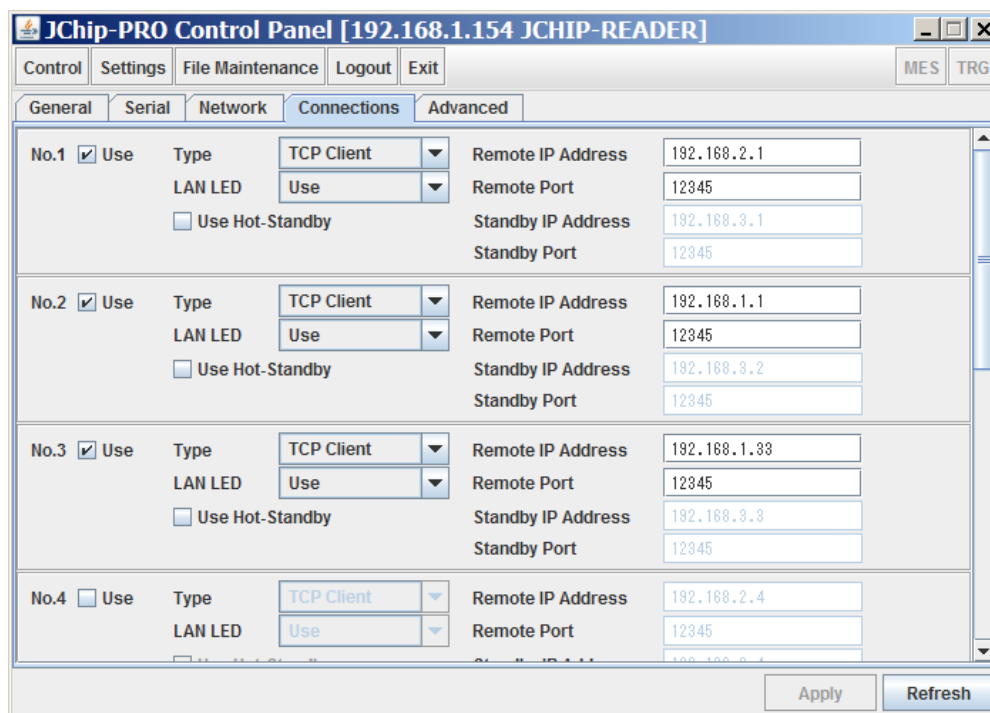
To set the port number accepting connection when setting TCP Server

### 6.6 LAN LED

- Use Receiver LAN lamp lights and blinks when connected
- No Use Receiver LAN lamp does not change

Remark: Network setting will be activated after re-start

## 7 Setting of Connections



The receiver can be connected to maximum of 8 locations

### 7.1 Type

- TCP CLIENT  
To use connections as TCP CLIENT  
To set Remote IP Address and Remote Port to connected point
- TCP SERVER  
To use connection as TCP SERVER  
Client software to be connected to Listen Port

### 7.2 LAN LED

When TCP Client is selected, the receiver LAN lamp can be controlled  
However, you cannot identify which connection by the lamp.

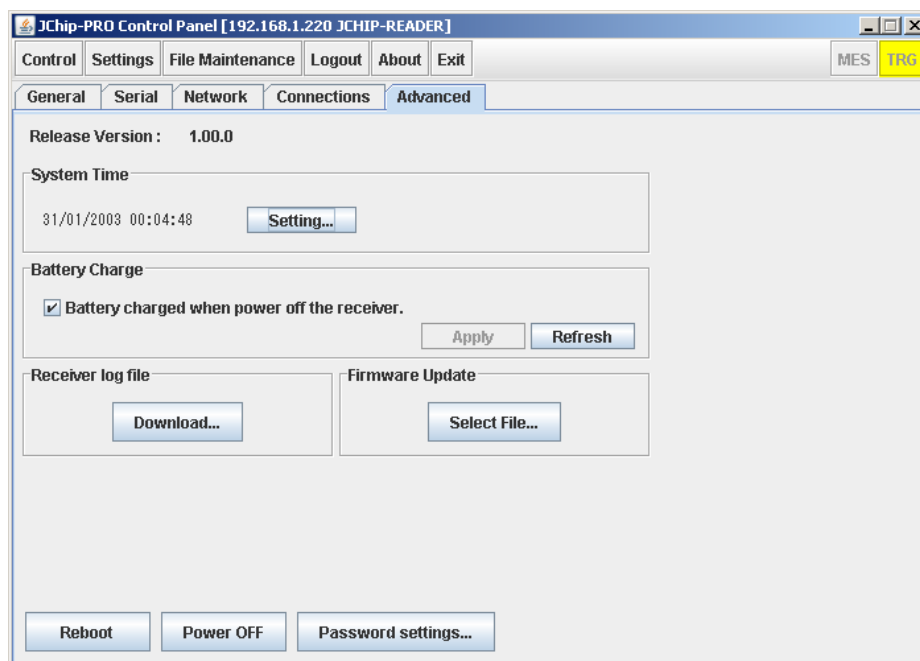
### 7.3 Hot Stand-by

Setting can be done only by communication command

When setting to TCP CLIENT and activate Hot Stand-by, it is necessary to set IP address and Port of server on stand-by

When hot stand-by is activated, in case Remote server was disconnected or if no response for 30seconds, connect to Standby server. Remote server and stand-by server to be connected by alternation.

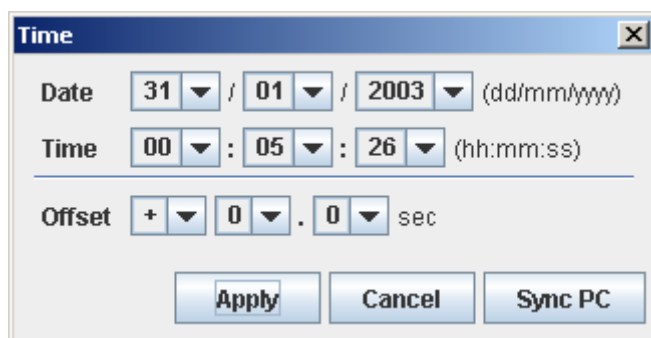
## 8 Setting of Advanced



### 8.1 Release Version

The version of the firmware will be necessary when asking questions.

### 8.2 System Time



Date and time of System time Setting. System time is used for time stamp of file Enter date by dd/mm/yyyy

### 8.3 Battery Charge

Select charging method of internal battery  
Default setting is battery charged when power off the receiver.

### 8.4 Receiver log file

To be used by Micro Talk Systems at the time of maintenance

### 8.5 Firmware Update

To be used when firmware is updated

## 8.6 Reboot

When changing network setting, re-start the system

## 8.7 Power OFF

To power off the receiver

## 8.8 Password settings...

To set password for the control panel

## 9 File maintenance

SERNO	File Name	Size(bytes)	Timestamp
1	D00.000	0	2003/01/01 00:16:55 * raw *
2	D00.001	738	2003/01/01 00:02:58 * raw *
3	D00.002	0	2003/01/01 00:08:28 * raw *
4	D00.003	0	2003/01/01 00:01:27 * raw *
5	D00.004	0	2011/03/09 18:04:04 * raw *
6	D00.005	0	2011/03/09 18:04:57 * raw *
7	D00.006	0	2011/03/09 18:10:49 * raw *
8	D00.007	410	2011/03/09 18:15:32 * raw *
9	D00.008	0	2011/03/09 18:15:54 * raw *
10	D00.009	73185	2011/03/09 18:26:41 * raw *
11	D00.010	3403	2011/03/09 18:45:26 * raw *
12	D00.011	105675	2011/03/09 18:52:25 * raw *
13	D00.012	0	2011/03/09 19:05:46 * raw *
14	D00.013	0	2011/03/09 19:10:19 * raw *
15	D00.014	0	2011/03/09 19:10:28 * raw *
16	D00.015	0	2011/03/09 19:10:43 * raw *
17	D00.016	3895	2011/03/09 19:41:51 * raw *
18	D00.017	671170	2011/03/10 16:40:21 * raw *
19	D00.018	0	2011/03/10 17:12:15 * raw *

Filter by PC-ID: ALL Count: 91

Buttons: Download... Delete... Refresh

### 9.1 Filter by PC\_ID:

Designate PC\_ID and select

### 9.2 DOWNLOAD

Select one file or download whole file by PC\_ID

Download...

Selected file : D00.000

Specified PC-ID : 00

OK Cancel

Download...

Selected file :

Specified PC-ID : ALL

OK Cancel

### 9.3 Delete

All files delete or part delete can be selected by PC\_ID

Delete...

Specified PC-ID: 00

All files

Keep some new files

Amount : (1-299)

OK Cancel

Delete...

Specified PC-ID: 00

All files

Keep some new files

Amount : 10 (1-299)

OK Cancel

## 10 About

---



Indication of control panel version and website of Micro Talk Systems